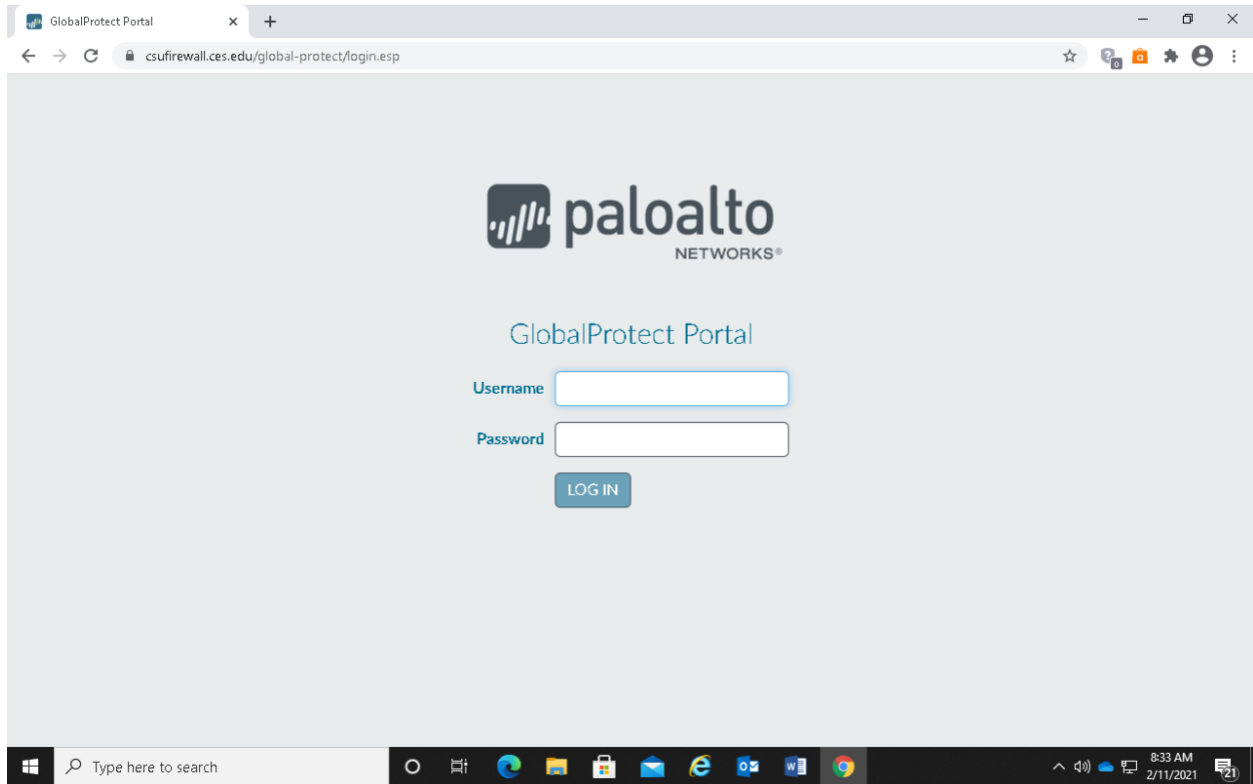
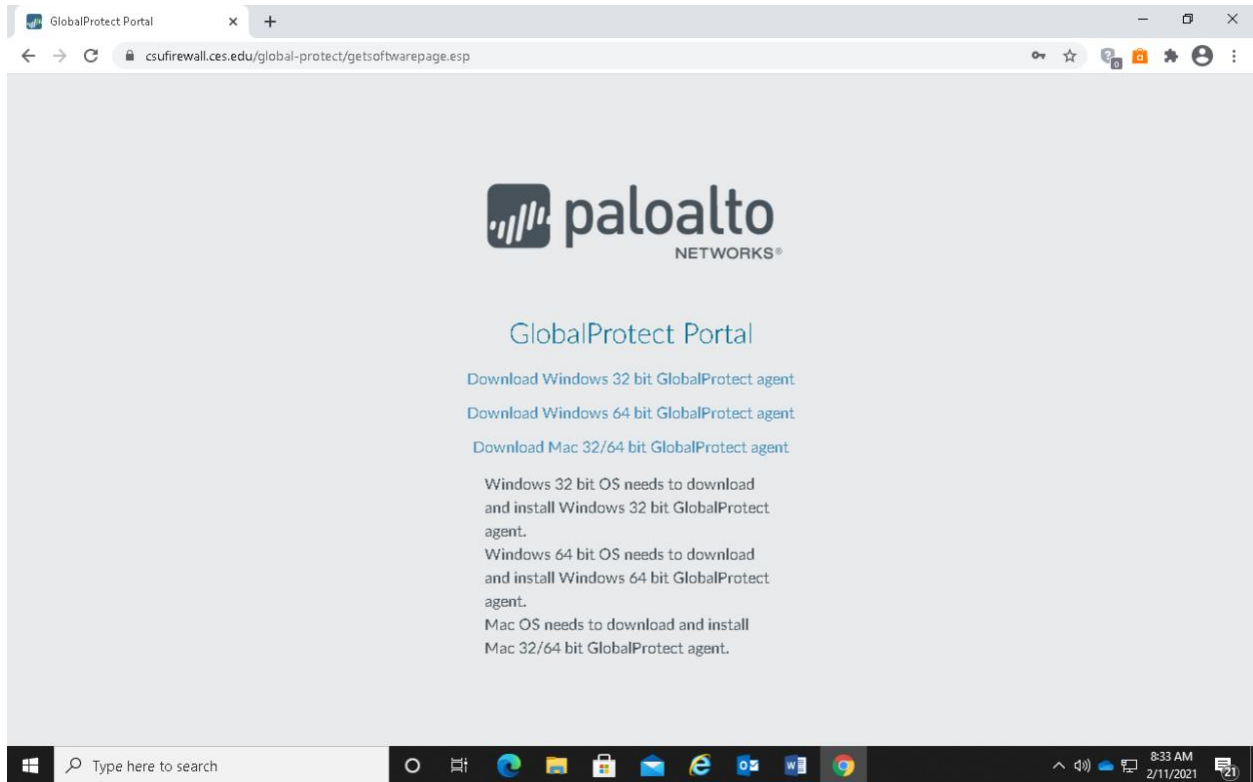


## Global Protect VPN Installation Instructions v. 5.1.7

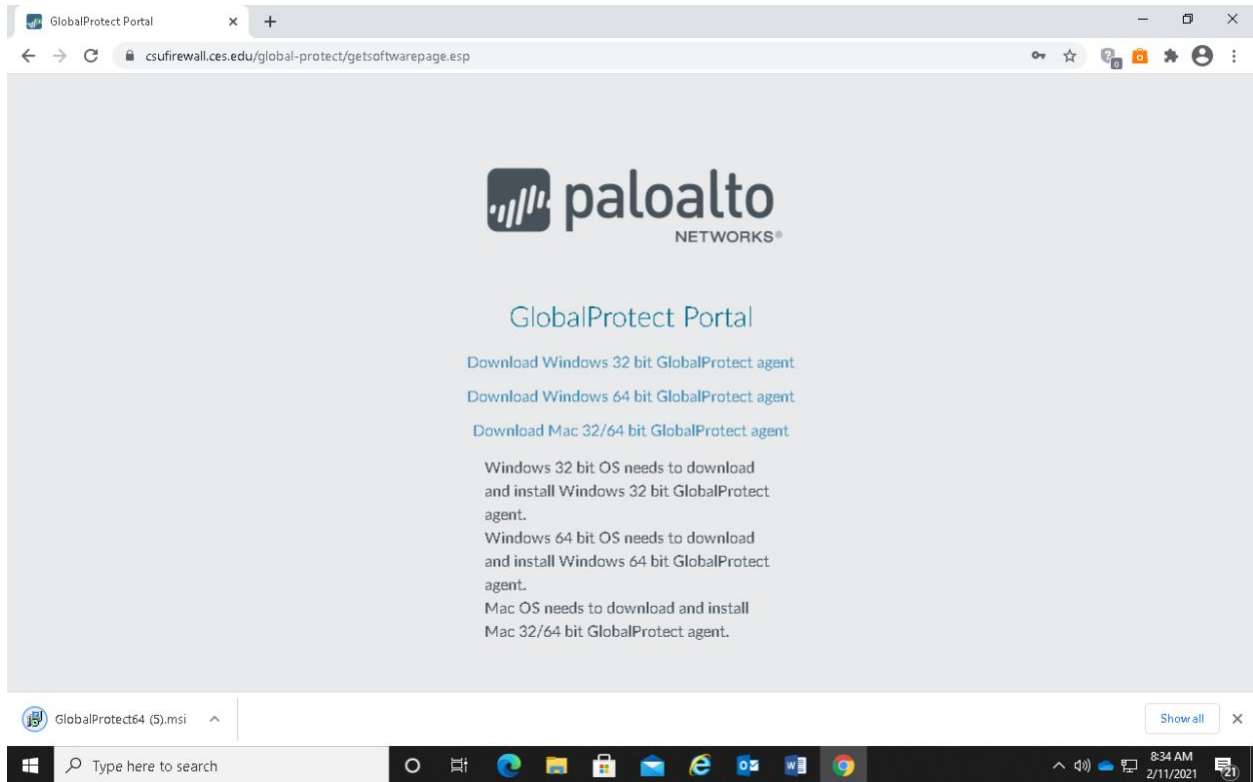


Please note these instructions will work with other versions of Global Protect VPN, but may vary slightly from the procedures in this document. Also, instructions may vary slightly, depending on the operating system you have installed.

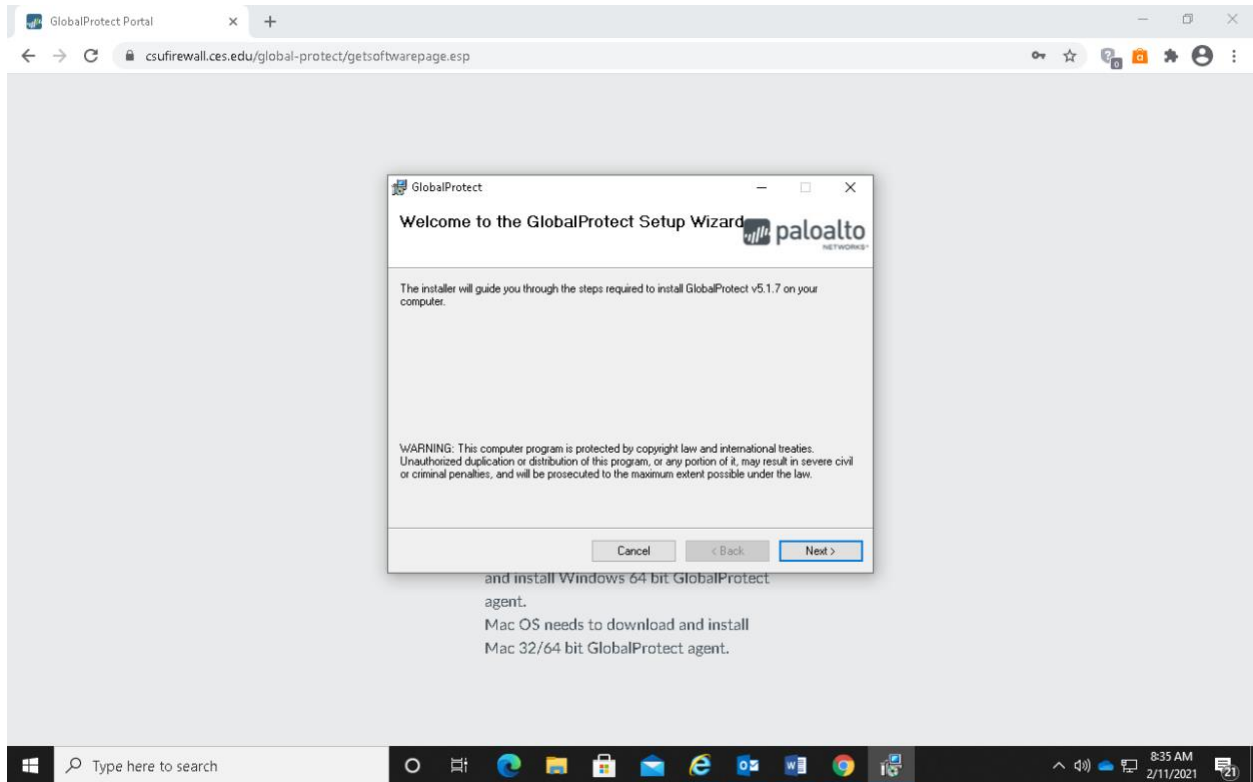
Go to the website <https://csufirewall.ces.edu>



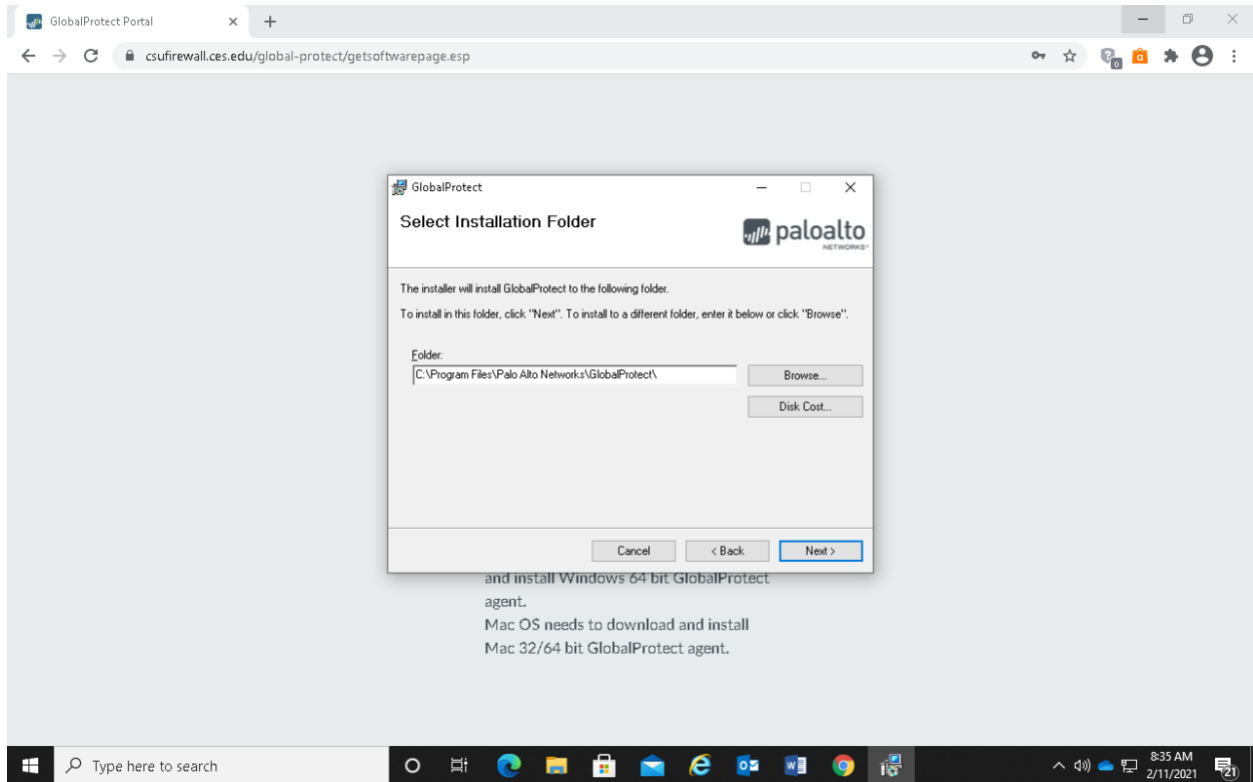
1. Select the correct version to install on your Windows environment computer. Most users will select the (Download Windows 64 bit Global Protect agent) version.



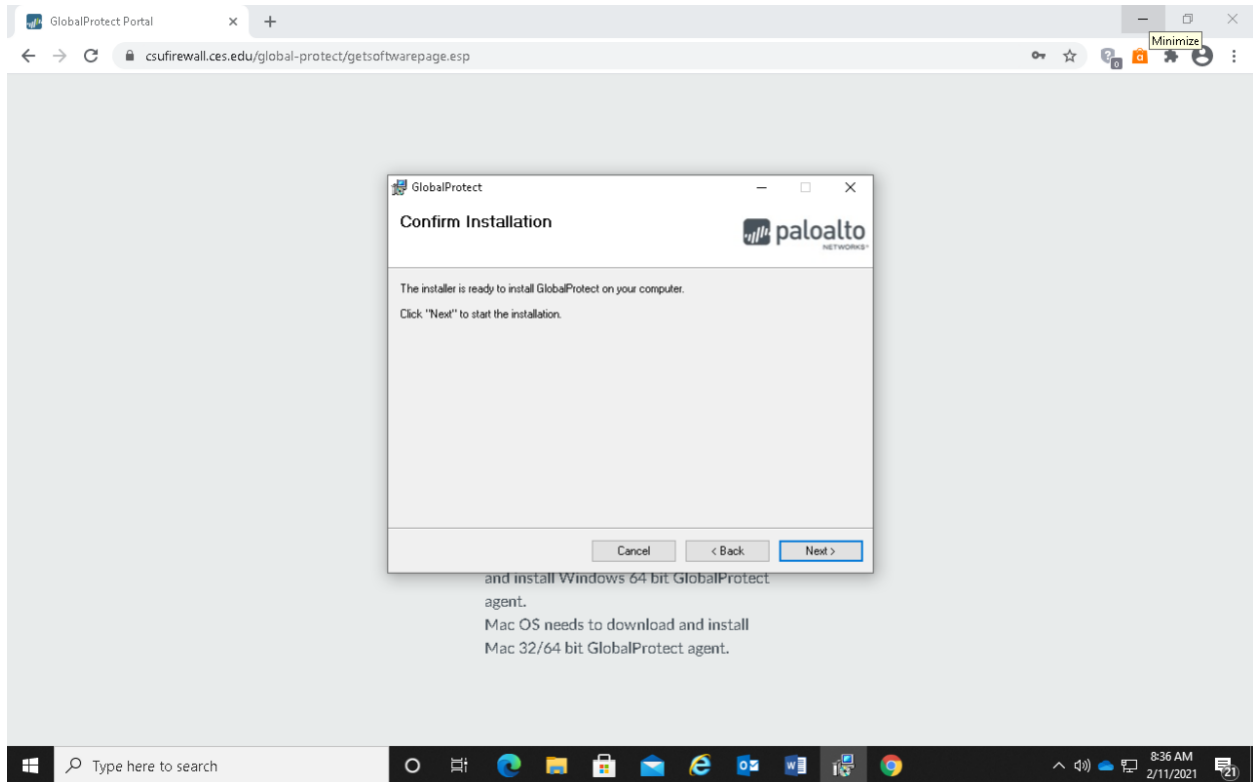
2. You can see Global Protect downloading in the bottom left corner in Google Chrome and top right in Mozilla Fire Fox. If you are using Internet Explorer, it will give you the option where to save or run the Installer during the download process.
3. Open the installer at the downloaded location.



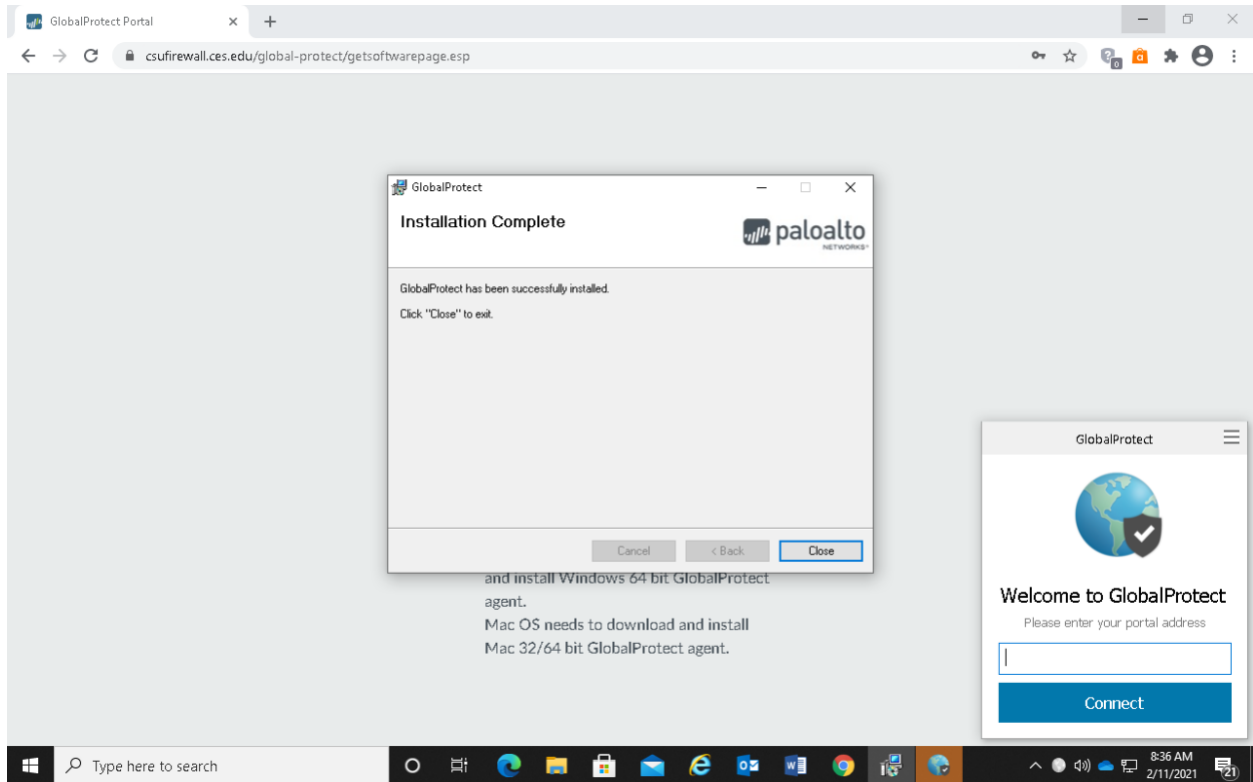
4. At the (Welcome to the Global Protect Setup Wizard) screen, select next.



5. At the (Select Installation Folder) screen, select the default location by clicking next.



6. At the (Confirm Installation) screen, select Next.



7. At the (Installation Complete) screen, select Close. In the lower right corner, the (Welcome to Global Protect) box has popped up automatically. Sometimes the (Welcome to Global Protect) box does not pop up automatically. If it does not, go to the task bar and click on the up arrow. Now click on the gray Globe with a red X in it.

GlobalProtect Portal

csufirewall.ces.edu/global-protect/getsoftwarepage.esp

**paloalto**  
NETWORKS®

### GlobalProtect Portal

[Download Windows 32 bit GlobalProtect agent](#)

[Download Windows 64 bit GlobalProtect agent](#)

[Download Mac 32/64 bit GlobalProtect agent](#)

Windows 32 bit OS needs to download and install Windows 32 bit GlobalProtect agent.

Windows 64 bit OS needs to download and install Windows 64 bit GlobalProtect agent.

Mac OS needs to download and install Mac 32/64 bit GlobalProtect agent.

**GlobalProtect**

Welcome to GlobalProtect

Please enter your portal address

csufirewall.ces.edu

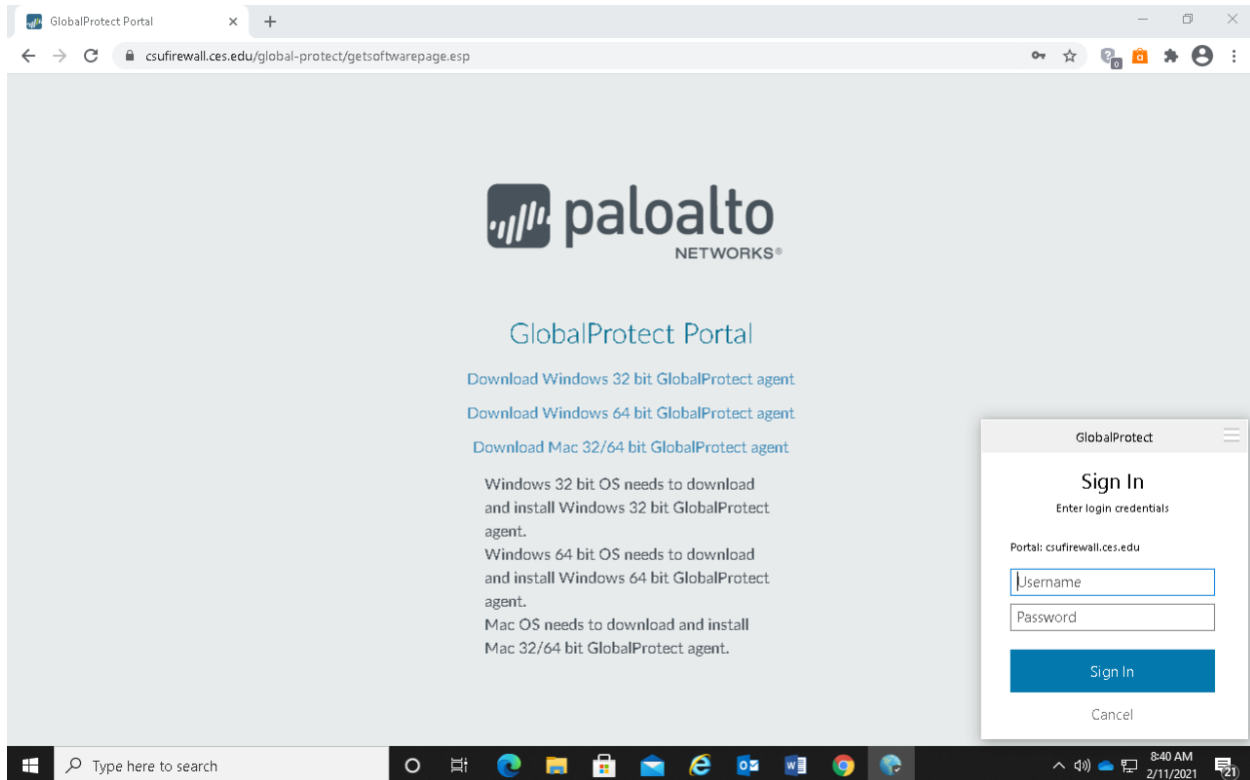
Connect

Type here to search

8:39 AM  
2/11/2021

8. At the (Welcome to Global Protect) box, at lower right corner of your screen, type in csufirewall.ces.edu and select connect.





9. Now, you will need to sign in to Global Protect at the (Sign In) box. You will enter as your user name the first part of your email address without the @centralstate.edu on the end. Also, do not enter the csu1\ before your user name.
10. Enter your email password on Next line and select Sign In.
11. It will say connecting in the box.
12. When sign in process has completed it will say connected.